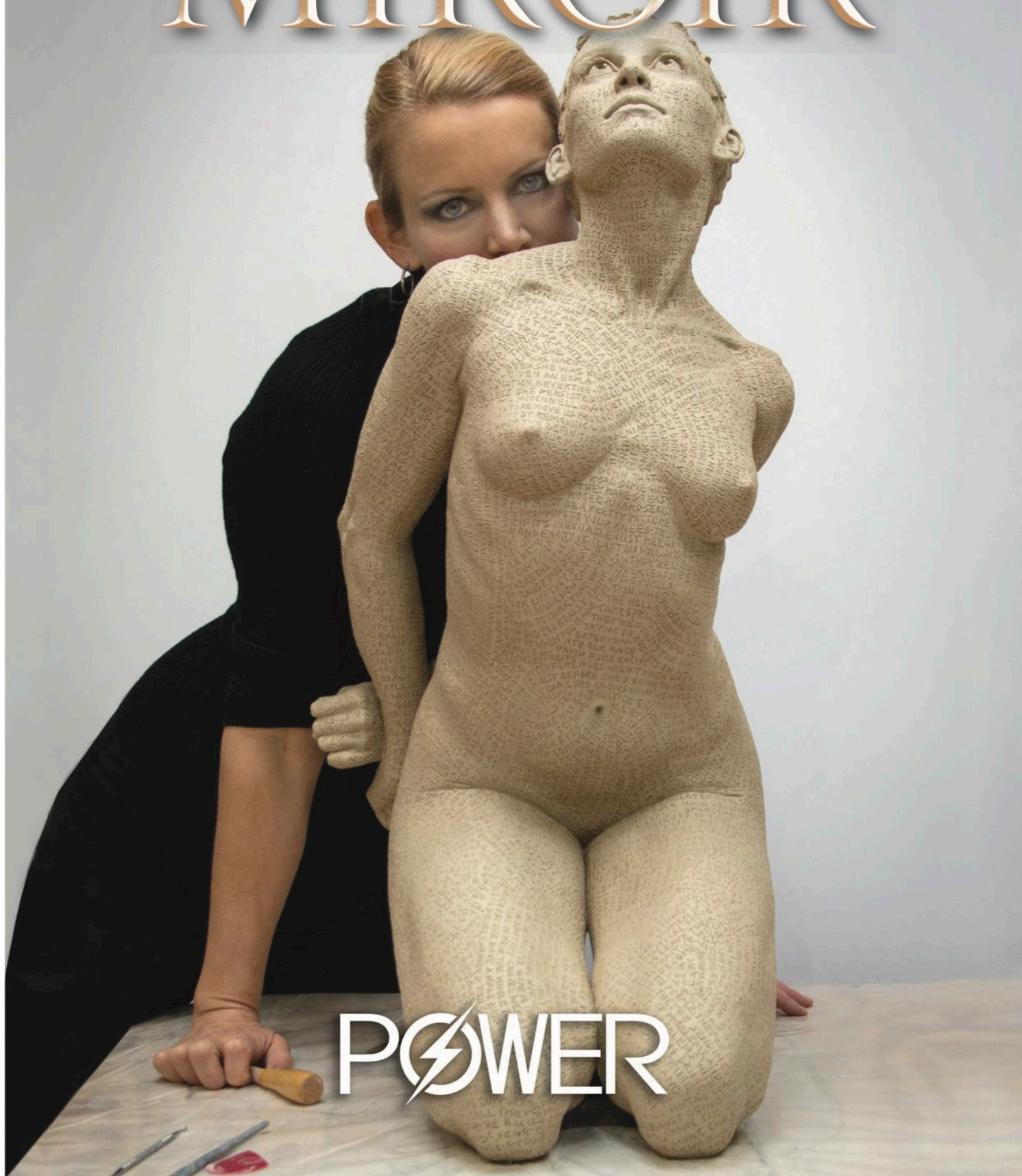


MIROIR



POWER



~ I consider this edition themed POWER as a Special Edition, as we normally focus on the art that our contributors create, whereas in this issue we are focusing on the people who have created *Themselves* as *The Art*, if you will. We have chosen this group of individuals because they have discovered through their self realizations how to be empowered and inspirationally empowering to others to love themselves by living their unique most authentic lives. It takes inner strength and determination to develop and display such great powers.

This issue of MIROIR is focused on those who...

- ~ have helped change perceptions by being an example, or breaking the rules.
- ~ have overcome personal challenges and have become leaders in their fields.
- ~ have become trailblazers and influencers for positive change.
- ~ have broken barriers and overcome established limitations.
- ~ have forged a new path and fought to change the paradigm of our society.

Our concept of Power is someone who has made a difference in others' lives by example or deed.

~ Jo David

MIROIR MAGAZINE

POWER

MIROIR MAGAZINE is honored to present the following
Featured Artist Portfolios reflecting on this issue's theme, "Power".
Visit MiroirMagazine.com for extended portfolios & artist information.

• Featured Artists

1	KRISTINE POOLE	104	ANTONIO HARRISON
2	CUNENE	110	CRISTIAN TOWNSEND
6	MICHAEL JAMES WHYLE	126	FARNAZ OHADI
8	CREATIVESOUL PHOTOGRAPHY	138	MEDUSIRENA MARINA
26	LEA HINZ	156	ELVIRA ~ CASSANDRA PETERSON
42	LIZZ LOPEZ	168	NIAGARA DETROIT
60	RAE RIPPLE	186	LEENI RAMADAN
72	KRISTINE POOLE	196	JIM JACKSON
90	MICHAEL DOUCETTE	212	LILLIAN LIU

On This Issue's Cover

KRISTINE POOLE

PAGE 72

• MIROIR MAGAZINE

JO DAVID: DIRECTOR
NINA PAK: ART DIRECTOR/PHOTOGRAPHER
WEBSMAN: WEB DESIGN

WWW.MIROIRMAGAZINE.COM

WWW.FACEBOOK.COM/MIROIRMAGAZINE
INSTAGRAM.COM/MIROIRMAGAZINE
TWITTER.COM/MIROIR_MAGAZINE

COPYRIGHT 2022 MIROIR MAGAZINE

~ ALL RIGHTS RESERVED ~

KRISTINE POOLE



Our current MIROIR theme of Power inspired Kristine Poole to share her thoughts on power and empowerment

Culturally, "power" is often associated with control, influence, perceived importance. When we say someone is powerful, we take it to mean that they have the ability, to some degree, to control events and people in ways that others might not be able to, perhaps arrange circumstances more to their liking. This control could come from a name, money, image or even a ideology that forces people into submission, but this kind of power is external. It comes from the outside in, from what they have or how they're seen. The curious thing is that this kind of power can be, in a way, bestowed on someone based on how others view them or what is believed about them.

Looking from a different viewpoint, I think of power as more of an internal characteristic, one that has to do with self possession, an unwillingness to cede power over ourselves to others. This sort of power might be seen as charisma, but I see it as having strength of character - knowing who you are, what you're doing here, what you're committed to and what you're not. It embodies the qualities of compassion, creativity, courage, positivity, accountability and humanity. Rather than desiring control, it manifests in a determination to contribute, to make a difference, often in substantial ways - almost a sort of mandate from the inner divine to use whatever power you may have in the service of helping others in all the ways you can.



Empowerment, then, can be seen as purposefully acting on a commitment to help others develop the self-confidence and inner strength of character to follow their passions, discover their own voice and become all they dream of being in their life. It can include helping others develop skills and self awareness or being a role model for what is possible. Sometimes empowerment is simply being the beacon that focuses the light on someone else, encouraging them to experience their own significance.

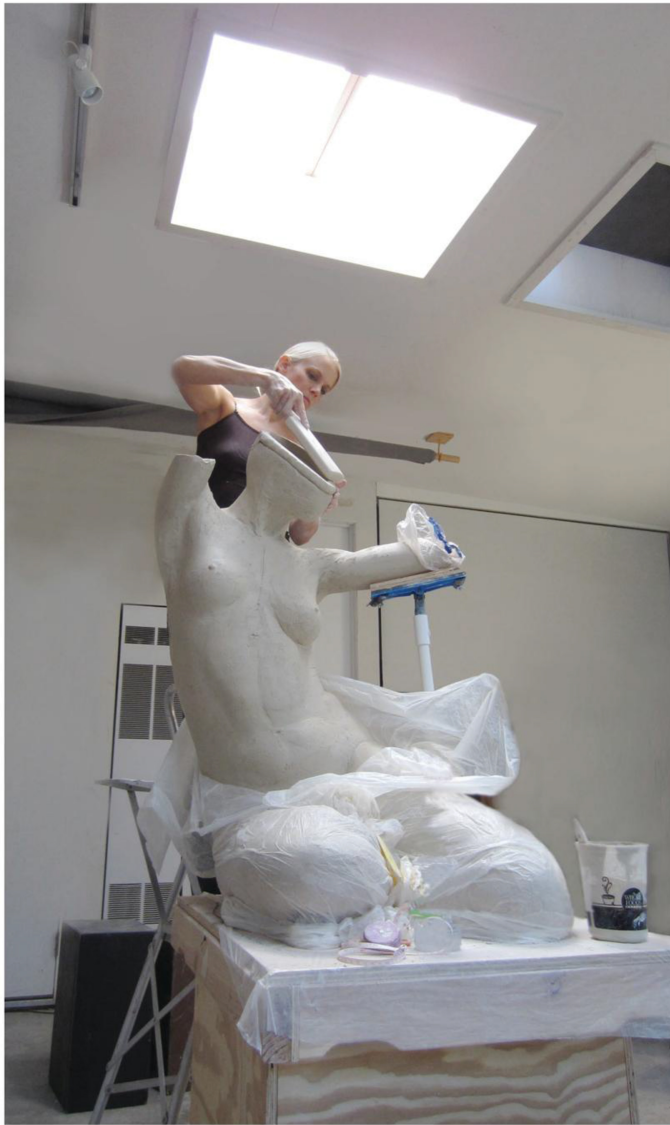


"Awakening" is about the moment of quickening, the instant of breaking past constraining inner dialogue and experiencing coming into being. The compact, coiled nature of the pose makes her feel a bit like a spring, compressed like a seed, filled with life and energy ready to burst forth.

The fourth finger of her left hand is subtly curving towards her thumb, just beginning to create the Prithvi mudra, wherein the fourth finger and thumb connect. Prithvi is said to be a mudra of strength, confidence and self-assurance, hinting at the juncture of awakening and freedom.



BLOSSOM



KRISTINE POOLE IN HER STUDIO



FLORA, ZEPHYROS AND THE BLOSSOMING OF CREATIVITY



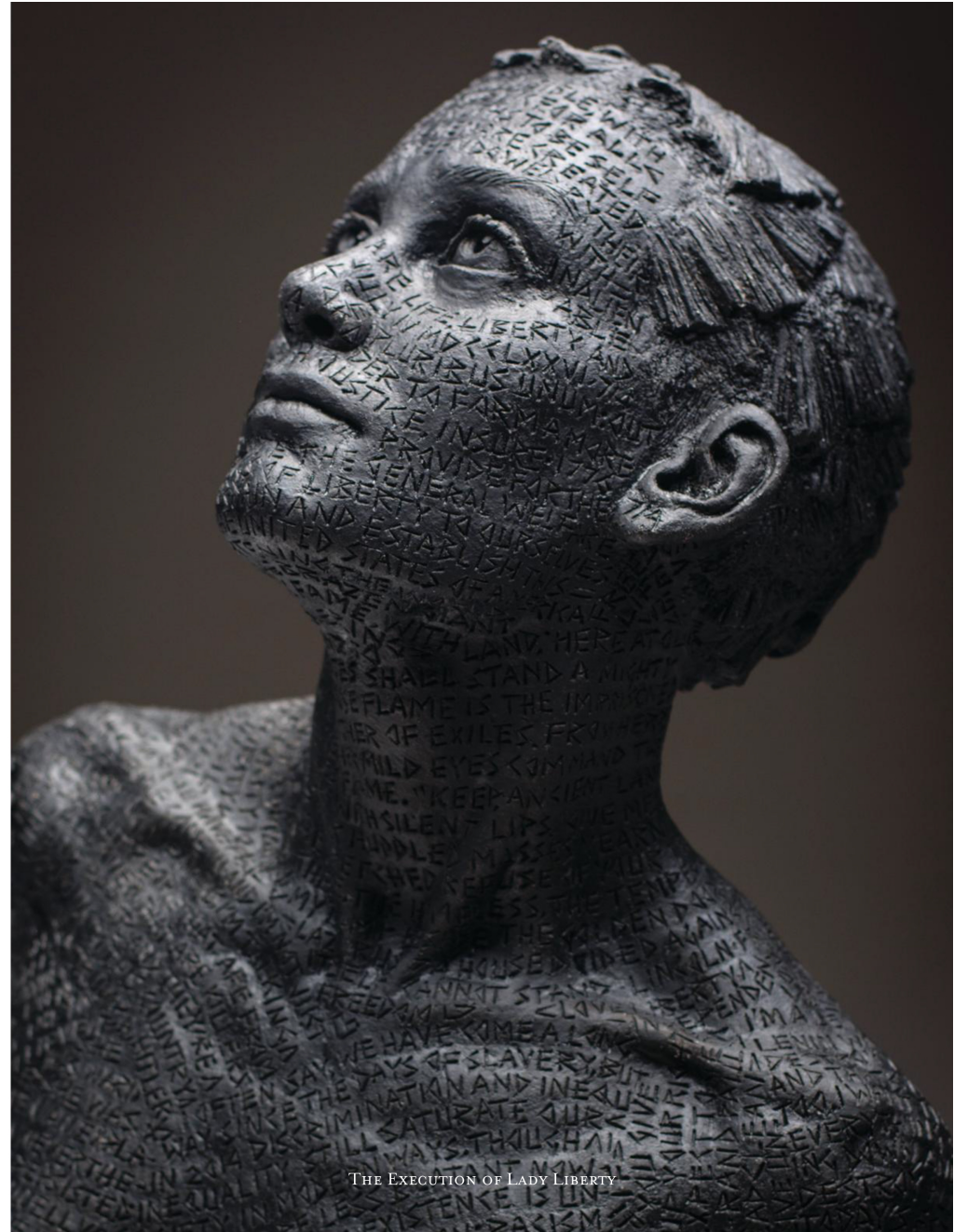
THE EXECUTION OF LADY LIBERTY

The text begins on her face with quotes featuring the ideology our country was founded on - words from the Declaration of Independence, the preamble to the Constitution, the national motto, and Emma Lazarus' poem from the Statue of Liberty- all momentous words that created a powerful new reality:

"We hold these truths to be self evident - that all men are created equal, that they are endowed by their Creator with certain unalienable Rights, that among these are Life, Liberty and the pursuit of Happiness"; "E Pluribus Unum - Out of many, one"; "with liberty and justice for all"; "Give me your tired, your poor, your huddled masses yearning to breathe free, the wretched refuse of your teeming shore. Send these, the homeless, tempest-tost to me; I lift my lamp beside the golden door!"; "United we stand, divided we fall" and more...

The words merge around her shoulders into mostly contemporary quotes that document the anger, despair and intolerance being expressed in the current schismatic milieu we appear to have come to. It may be that words, ideas and the spread of divisive ideologies may be the most formidable weapons of mass destruction we have at our disposal. Once people can be convinced that others are somehow inferior, detestable or in some way undeserving of the same liberties and freedoms, it becomes easy to begin to eradicate the rights of (or do even worse things to) the communities that are "different" as they begin to be viewed as "less than" and undeserving of the same consideration and compassion. Rhetoric that dehumanizes, de-legitimizes or objectifies another race, belief structure, culture, gender, orientation or lifestyle choice is the first step.

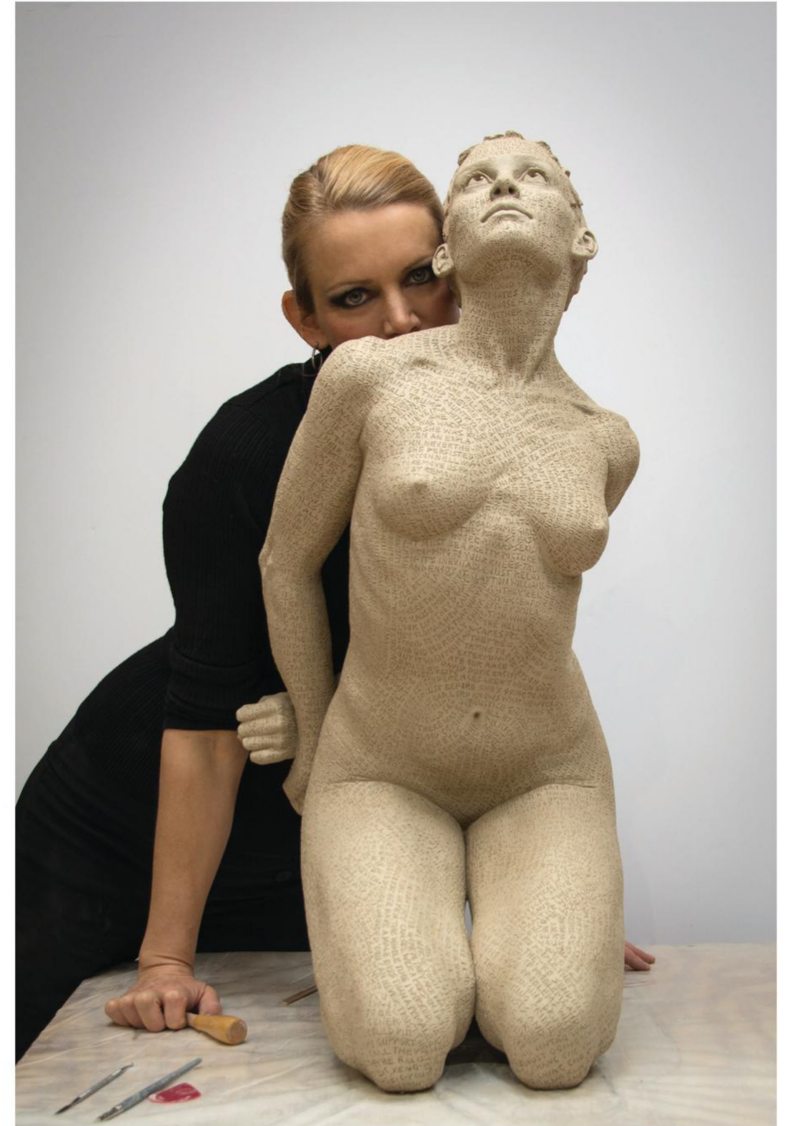
I am reminded some Andrew Lloyd Weber lyrics from "Evita" - "Where do we go from here? This isn't where we intended to be..." There must be another way.



THE EXECUTION OF LADY LIBERTY



KRISTINE POOLE WORKING ON "THE EXECUTION OF LADY LIBERTY"



"THE EXECUTION OF LADY LIBERTY"



"THEY SAID ABIGAELE WAS A WITCH"

I went to Finland with my family for a reunion with our distant relatives. Our Finnish guide, whose English was a bit sketchy, kept referring to one of our ancestors - an indigenous Sami woman - saying, "Abigael was a witch," a fact I found very intriguing. My relatives, however, who are very religious, were far from entertained by that idea.

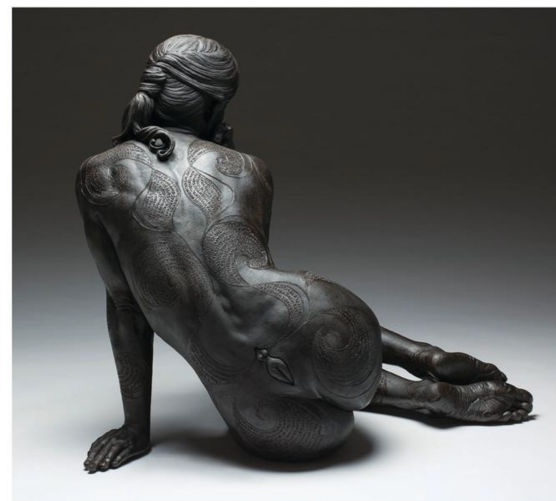
At one point I said to him, "Vote, we've been so enjoying hearing about our ancestors, but I have a question. In English, when you say the word, 'witch' it means something very specific - a per-

son who follows a particular set of beliefs. Do you mean that, or do you mean that Abigael was a shaman, a medicine woman - a person who gathers plants and herbs to help heal others?" And he said, "Yes! That is what I mean!"

The interaction made me think about the way our descriptions or labels for someone can have immediate and dramatic impact on how others see them. She is textured with the story of Abigael and other stories or poems people have written about me.



"THEY SAID ABIGAELE WAS A WITCH"



The curled pattern of the words represent how the things people say, both positive and otherwise, weave around us often becoming part of our personal mythology.

A little story about Abigael's coming into being:

Lady Abigael challenged me from the beginning. I was working on her simultaneously with "Wordcage." Completing both life-sized figures when the clay started drying often felt like having to choose which child to save. Fortunately, I was able to complete them both.

When it came time for the finishing, I had selected a very clay-like color to go with the rest of the sculptures in the EPIC show. I'd done extensive tests to confirm the color's compatibility with the clay, but... when I applied it, Abigael turned pink with blotches that looked like diaper rash. Oh no! How could this happen? So, I decided to make her black, but when I applied that patina, she turned shiny and looked a bit like plastic. Oh no! How could that happen? Colin said, "Let's torch her." So we did. Outside, we set her on fire. Given the history of persecution of people following nature religions, the sight of her sitting contemplatively amongst the flames engulfing her made my breath catch in my throat. And the results were remarkable. The patina in the recesses of the words maintained a slight sheen while the black on the surface turned into this stunning satin sheen that replicated metal or another material. It felt as if Abigael knew she was different from the beginning and was refusing to look like the rest of the sculptures in the show. She just needed to keep pushing me until I figured it out too.



"Ki An"

"Ki An" means "what if?" in Greek. She's the muse that inspires with questions like, "I wonder what would happen if I..." or "What if we..." and we find ourselves off and running on a new creative adventure. "Ki An" invites you to look into the unknown by taking a peek into the vessel she offers.

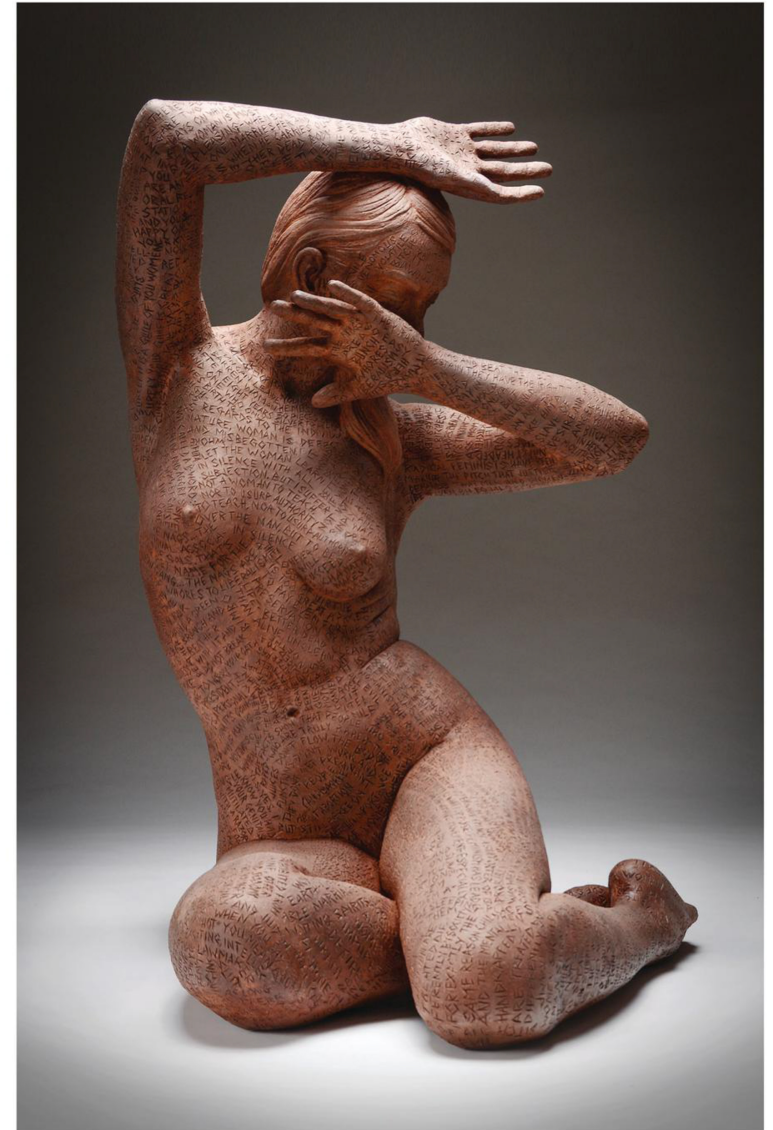
She was honored to receive the "People's Choice Award" at the Ceramics National Exhibition at the San Angelo Museum of Fine Arts in 2018.

"Scarification of the Feminine" represents external cultural or societal constraints.

She is textured with quotes from historical and contemporary figureheads, political and cultural leaders, religious texts and song lyrics that regulate or define women's roles in societies. This piece highlights the power that words have to create or destroy.



"Ki An"



"SCARIFICATION OF THE FEMININE"



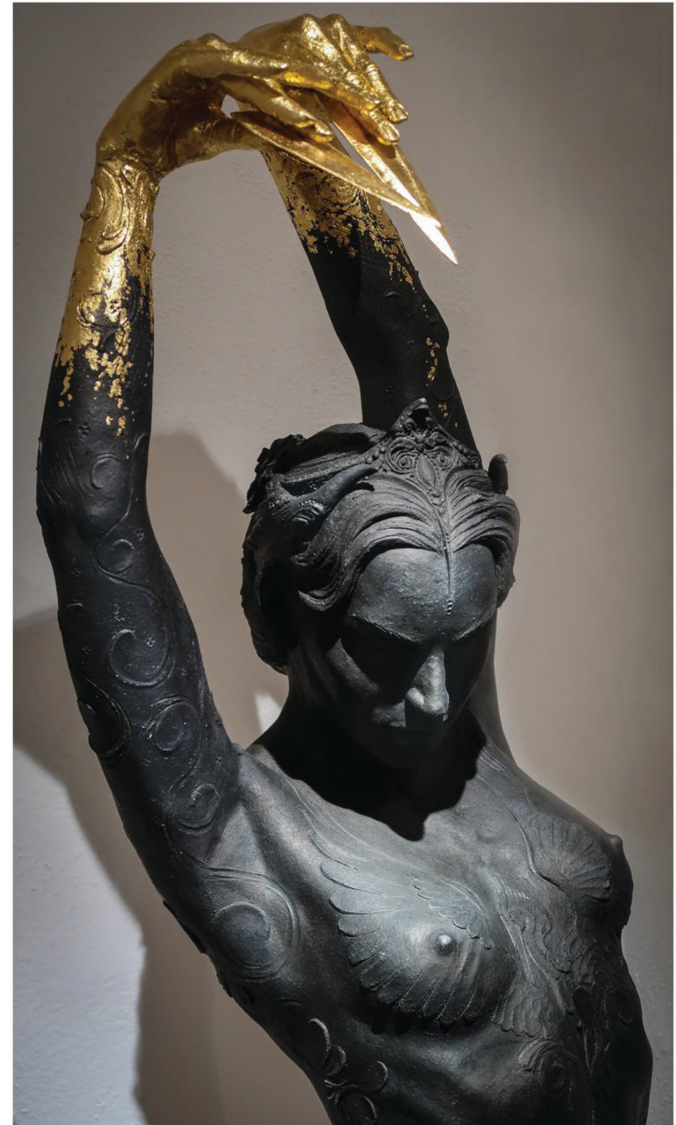
SCULPTING IN THE EXHIBITION SPACE

Despoena: Muse of Challenges

"Despoena" is Greek for 'the mistress', and indeed, she is a most challenging mistress to serve.

This is a muse we all have faced at one time or another. She's the one that will break your heart - throwing experiences your way to make you stronger, test your resolve or cause you to become more introspective for a period of time - descending into the darkness to return with new insights. Some of the most beautiful works have been created out of great sorrow.

The pose of this sculpture is based on the dance of the bullfight - the Paso Doble. In the Paso Doble, there are dance steps that mimic the actions of the Banderillero - the one who pierces the bull in the upper back, causing grave injury but not death. While I am fundamentally opposed to bullfighting, the image of this muse willing to sting the heart in the name of inspired work seems most appropriate.



"DESPOENA IN SHADOW"



"EVE CHOOSES CHOICE"



KRISTINE POOLE

"Eve Chooses Choice"

The desire for the freedom and power to choose for ourselves is as inherent in human beings as breathing. This piece gives a new perspective on the Biblical story of "the fall of man from grace" in the garden of Eden. Rather than relying on blind obedience to externally imposed structures, in this powerful gesture Eve is knowingly and willingly choosing to choose right from wrong, good from evil for herself. With this, she also willingly accepts the consequences of her decisions. This piece represents the moment of choosing, with Eve and the serpent acting as partners in her transformation into a fully realized human being.

K R I S T I N E P O O L E . C O M